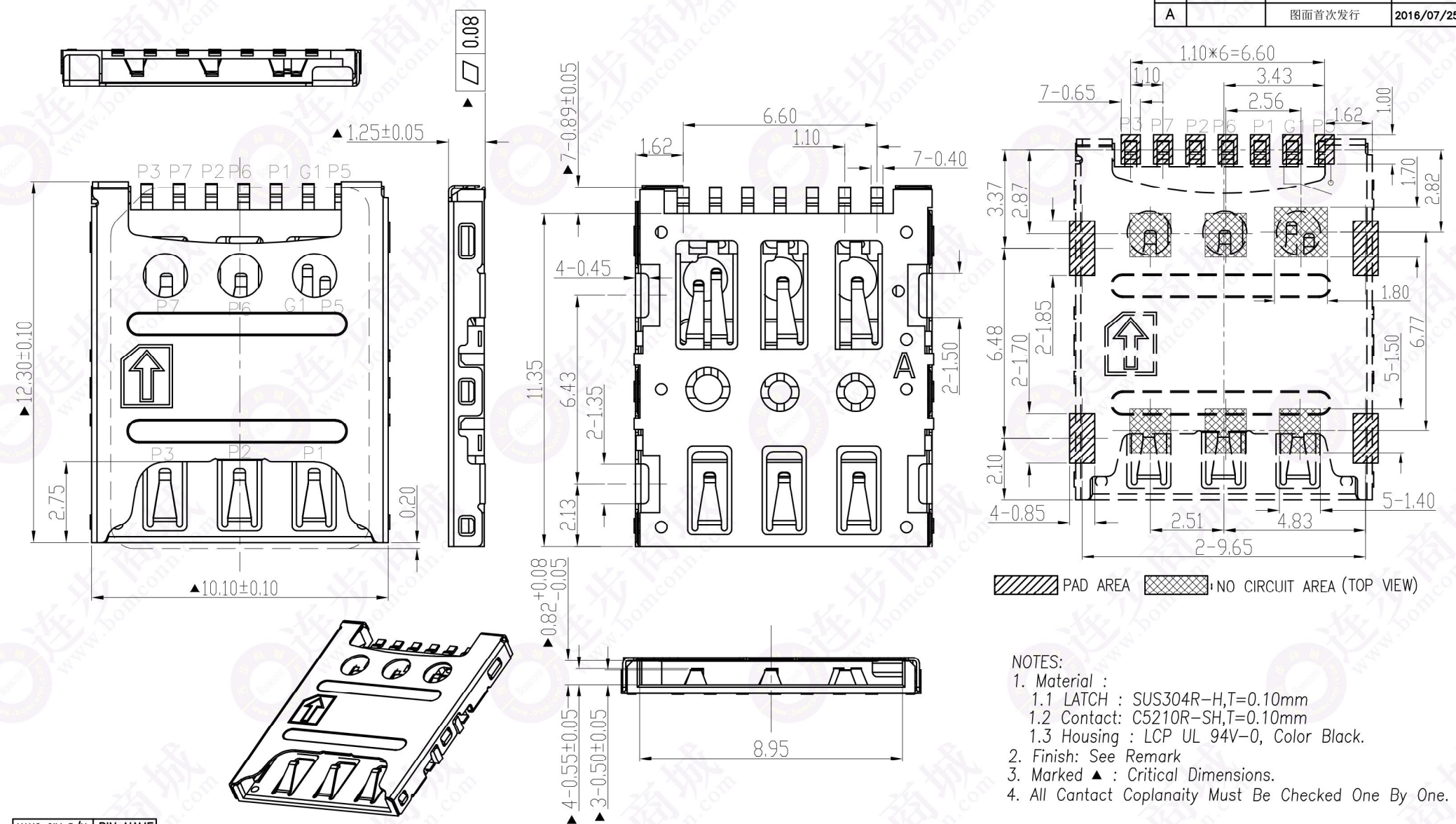


REV.	ECN.NO.	MODIFY.CONTENT	DATE
A		图面首次发行	2016/07/25



- NOTES:
- Material :
 - LATCH : SUS304R-H,T=0.10mm
 - Contact: C5210R-SH,T=0.10mm
 - Housing : LCP UL 94V-0, Color Black.
 - Finish: See Remark
 - Marked ▲ : Critical Dimensions.
 - All Contact Coplanarity Must Be Checked One By One.

NANO SIM P/N	PIN NAME
P1	VCC
P2	RST
P3	CLK
P5	GND
P6	VPP
P7	I/O
G1	SWITCH

ITEM	NAME	P/N	FINISH	QUANTITY/EACH
③	SHELL	S-0000-229B(有LOGO)	半金镍, 1U"Au Min.	1
		S-0000-229B-0(无LOGO)	半金镍, 1U"Au Min.	1
②	CONTACT	T-0000-360B	半金镍, 1U"Au Min.	1
①	HOUSING	I-0000-357	LCP S475	1

GENERAL TOLERANCE		图号	5001A0726-002	设计	WIND	比例	1:1
X.±0.35	x.'±5'	品名	1.25H 7PIN NANO SIM CARD CONN.	审核		单位	mm
.X±0.30	.x'±2'			核准		视角	⊕
.XX±0.20	.xx'±1'	料号	5001-SM3125D-07R1-00	日期	2016/07/26	版本	A
.XXX±0.15	.xxx'±0.5'	东莞市商阳电子有限公司					
页号	1/1						